

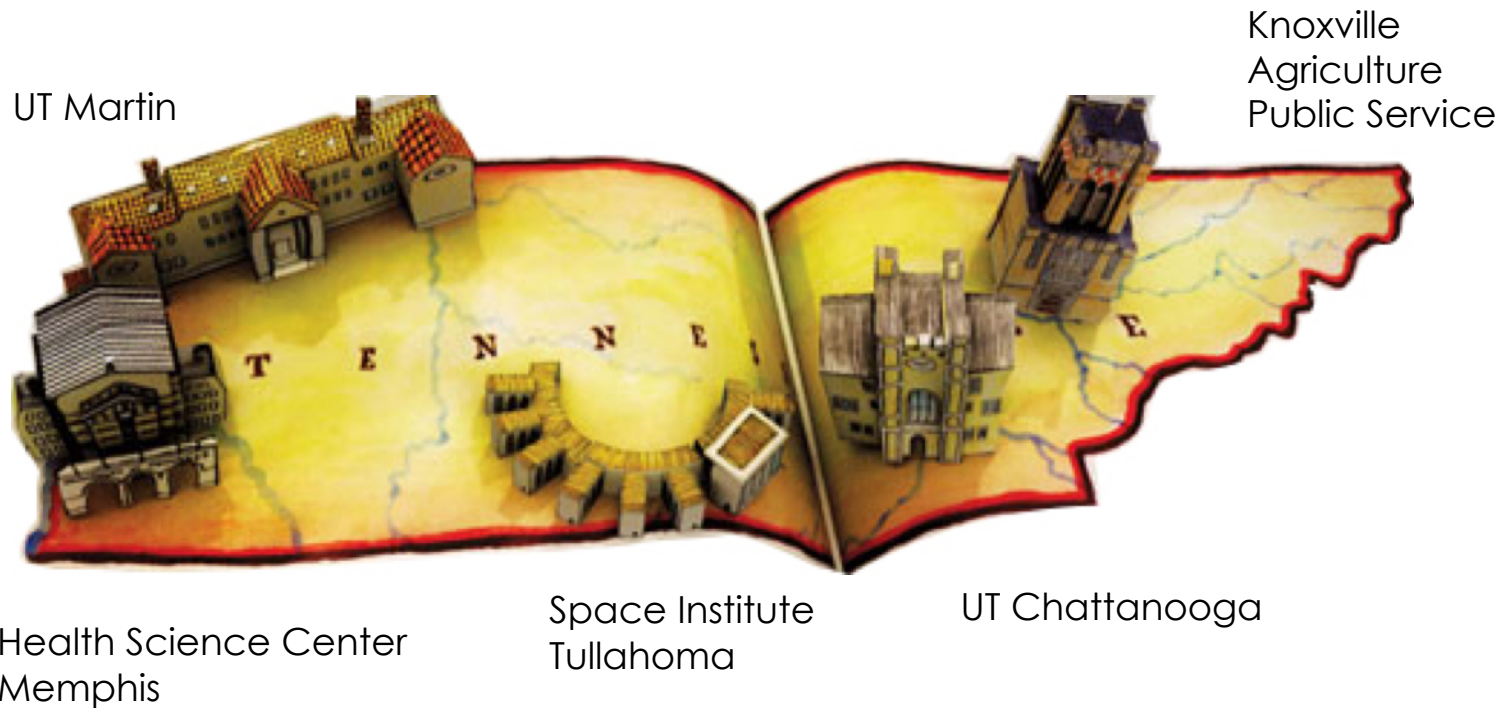
TECHNOLOGY TRANSFER

FEBRUARY 21, 2017

MAHA KRISHNAMURTHY, Ph.D., MBA
UTRF ASSISTANT VICE PRESIDENT OF LICENSING

STATEWIDE SERVICE

UTRF offices in Knoxville and Memphis serve all four campuses and three institutes of UT system



UTRF MISSION

TECHNOLOGY TRANSFER

- The mission is to encourage innovation, enhance research, and facilitate economic development by commercializing intellectual property created within the University of Tennessee system.



Research
Growth



Intellectual
Property
Commercialization



Entrepreneurial
Culture



Economic
Development

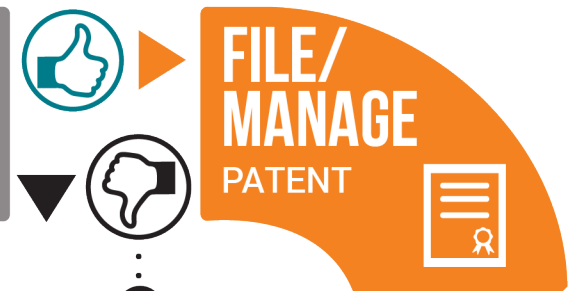
- Revenue generating license agreements.
- New company formations based on inventions created at UT.

UTRF TECHNOLOGY TRANSFER

Technology Transfer is a process to move knowledge and inventions from UT to an external partner to create products and services for public benefit.



IDEAS
RESEARCH



RETURN INVENTION

- i** If your invention is declined, you will receive a formal close letter from UTRF, relinquishing UTRF's ownership rights.
- If the rights are returned to you, you owe nothing to UTRF, regardless of what we may have spent.

WHAT HAPPENS AFTER I DISCLOSE MY INVENTION?

- Stage of development
 - Idea stage, proof-of-concept, prototype
- Analyze patentability
 - Prior art
 - Potential blocking patents
- Analyze market size
 - Unmet need
 - Disruptive/me-too
 - Market portion the product will capture
 - Time to Market
- Present inventor with a report containing all this information and our initial decision

WHY BOTHER WITH IP?

IP provides a unique and proprietary advantage

EXAMPLES OF UNIVERSITY IP LICENSES

YAHOO!

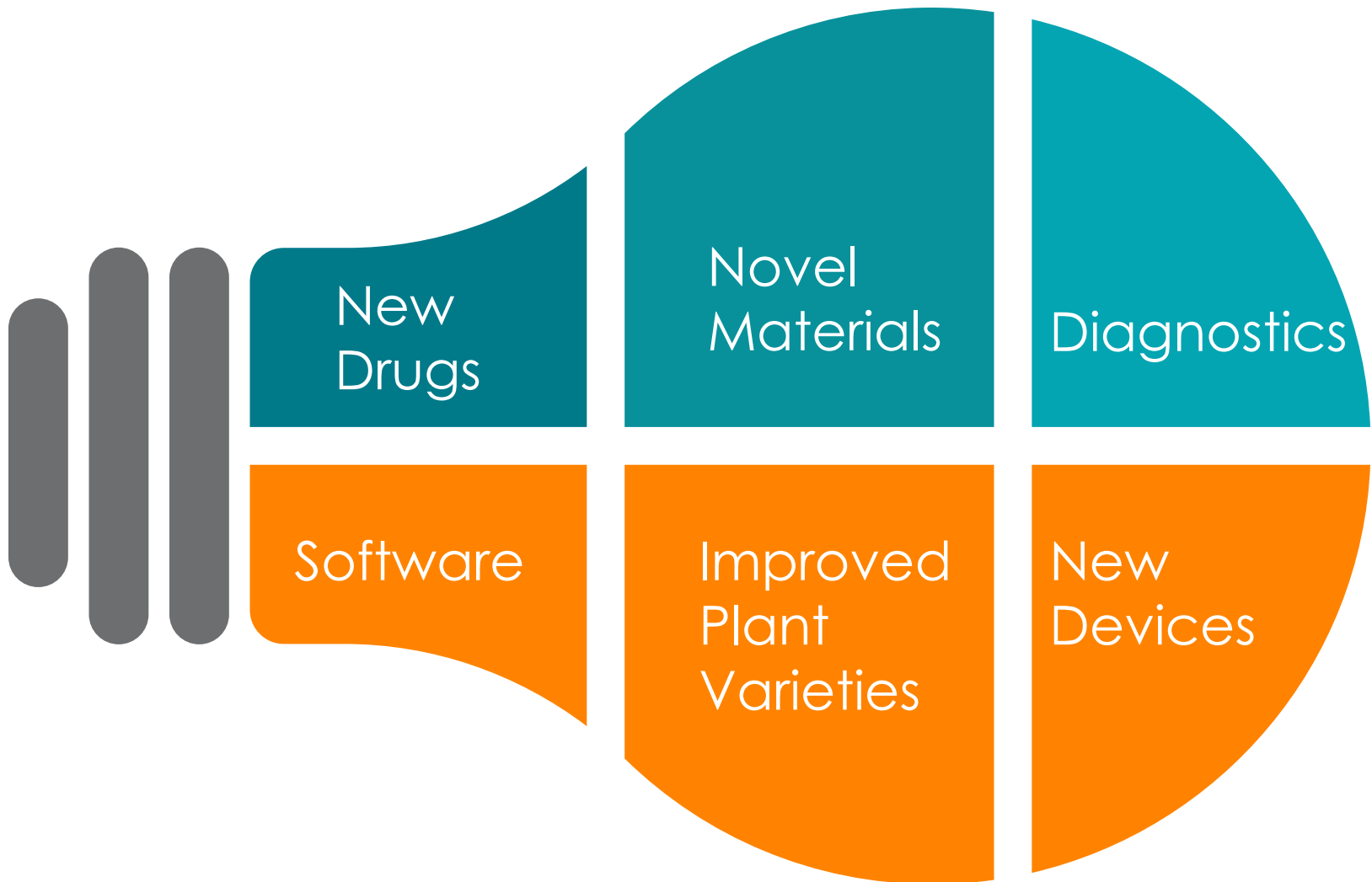
PROCRIT®
EPOETIN ALFA

Google™



LYRICA®
PREGABALIN

TYPES OF INVENTIONS



I.D.E.A. FOR UT INVENTORS & STAFF

fast



secure



easy to
track progress



IDEA is the secure, online portal for invention disclosures at the University of Tennessee. It offers a fast, easy way to submit disclosures.

- The application is available 24/7/365 and compatible with any PC/Mac/Phone/Tablet.
- The employee's UT netID is linked automatically to simplify the submission and approval process.
- Submission and approval status are monitored in real-time. Disclosures are submitted for commercialization in just minutes!
- IDEA is paperless and ecofriendly.



Technology Transfer & Licensing

utrf@tennessee.edu Knoxville 1-865-974-1882 | Memphis 1-901-448-7827

Patterson, Stacey Swiger ▾

Search

IDEA Home

Invention Disclosure Enterprise Application

Invention Disclosures waiting on my approval

No Invention Disclosures were found.

My Invention Disclosures

[+ Start Invention Disclosure](#)



{no title for this Invention Disclosure}

How to use IDEA

To start a new invention disclosure, click on [+ Start Invention Disclosure](#). This will initiate a new disclosure, and should be used for a new invention that has not been previously submitted to UTRF.

To edit an existing disclosure, click on the Edit icon . You can only edit a disclosure if you are listed as the Primary Contact. Also, once a disclosure has been submitted for approval, and is in Routing status, it can no longer be edited, only viewed.

To view a disclosure that has already been started, click on the View icon . You can view any disclosure that you are listed on.

To create a PDF copy of an invention disclosure, click on the PDF icon .

To delete an invention disclosure, click on the Delete icon . You cannot delete disclosures which have already been submitted for approval, or which have been approved.

IDEA Dashboard

0 Draft

0 Routing

0 Completed

How to use the IDEA Dashboard

The dashboard provides a quick way for you to see organized lists of all disclosures submitted to UTRF via IDEA. Note that the IDEA application does not have access to past files, so no inventions that were submitted to UTRF on the old form will be visible on your dashboard. Please contact any UTRF staff member if you need a comprehensive list of your pre-IDEA inventions.

Click on [Draft](#) to see a list of all your invention disclosures that are currently being drafted, but have not yet been submitted for approval. This includes disclosures on which you are the Primary Contact, and disclosures on which somebody else has listed you as an invention but you are not the Primary Contact.

Click on [Routing](#) to see a list of all your invention disclosures that are currently in the routing/approval process, but have not yet been assigned to UTRF for management.

Click on [Completed](#) to see a list of all your invention disclosures that have been approved and assigned to UTRF for management.

University of Tennessee Campuses & Institutes

UT Knoxville

UT Chattanooga

UT Martin

UT Health Science Center

UT Institute of Agriculture

UT Institute for Public Service

UT Space Institute



UTRF Mailing List

Subscribe to our mailing list to stay up-to-date with seminars, funding opportunities and more.

Quick Links

[Submit Disclosure](#)
[Business Incubator](#)
[Entrepreneurship](#)
[TENNXC](#)

UTRF INTELLECTUAL PROPERTY POLICY & REVENUE SHARING POLICY

INTELLECTUAL PROPERTY POLICY: Inventions made by UT employees in the course of their duties or using UT resources and facilities are owned by UT and assigned to UTRF.

REVENUE SHARING Policy

\$0 - \$5,000			
100% Inventors	0% Department	0% Campus	0% UTRF
\$5,000 - \$1M			
40% Inventors	15% Department	15% Campus	30% UTRF
\$1M+			
35% Inventors	20% Department	20% Campus	25% UTRF

Note: After the first \$5,000, distributions are made on net revenues remaining after legal fees have been deducted.

RECENT PRODUCT LAUNCHES USING UT TECHNOLOGY

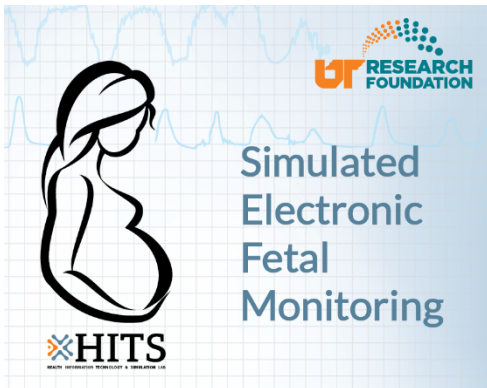


**Bovichek® *M. avium* spp
paratuberculosis (Johne's)
Antibody Test Kit, ELISA**



LifeCareSim

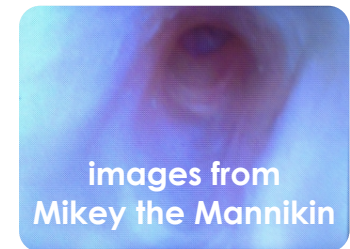
Game to teach nursing through
real-life scenarios



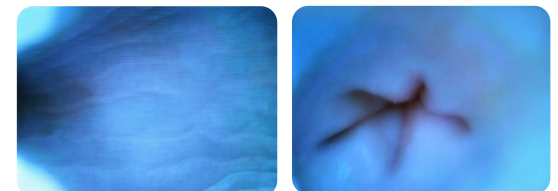
Design, view and share fetal heart
rate and contraction charts and
learn the basics of Electronic Fetal
Monitoring (EFM) in a fun and
intuitive way with the simulated app.



**Michael Angelo (Mikey)
K9 Endoscopy Mannikin**



images from
Mikey the Mannikin





WelchAllyn® RETINAVUE™ NETWORK

Diabetic retinopathy screening made **SIMPLE and AFFORDABLE** for primary care physicians.

With early detection **95%** of vision loss cases can be prevented, but **less than 50%** of patients are screened.



Electronic billboard in Times Square, NYC
promoting the national launch of RetinaVue



Dr. Edward Chaum,
UTHSC Department of Ophthalmology
Co-inventor and startup founder

TEAMING UP FOR SUCCESS

INVENTOR PARTICIPATION IS CRITICAL FOR
SUCCESSFUL LICENSING OR BUSINESS START-UP.

- Industry contacts
- Ensure patent application fully and accurately describes the invention
- Highlight key advantages to promote effective marketing



UTRF Licensing Staff



Nghia Chiem, Ph.D.
Licensing Associate



Maha Krishnamurthy, Ph.D.
*Assistant Vice President
of Licensing*



Andreana Leskovjan, Ph.D.
Licensing Assistant

utrf@tennessee.edu | 865-974-1882

WHEN TO CONTACT UTRF

- ANYTIME!
- Before presenting in a public forum
- Before publication in any media

<http://utrf.tennessee.edu/>